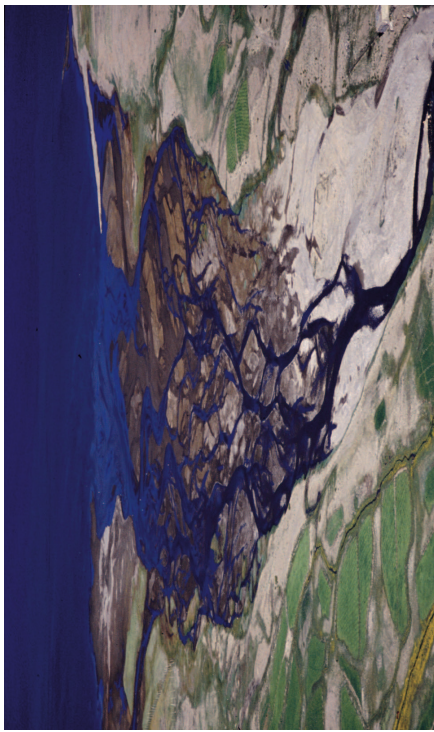


A1. Drainage basins and their management

(b) Photographs X and Y show two fluvial landforms.

X



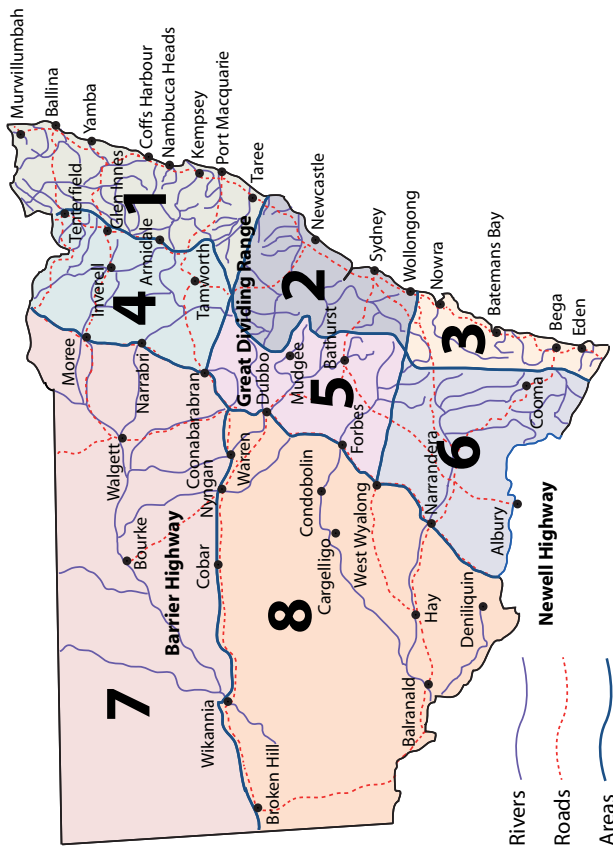
Y



[Source: T. Cole]

B7. Contemporary issues in geographical regions

(b) The map shows eight regions of New South Wales, Australia.



[Source: http://www.fisheries.nsw.gov.au/_data/assets/image/6424/rftfcc-map.gif from the page <http://www.fisheries.nsw.gov.au/recreational/freshwater/freshwater/rftfcc> (July 28, 2007)]